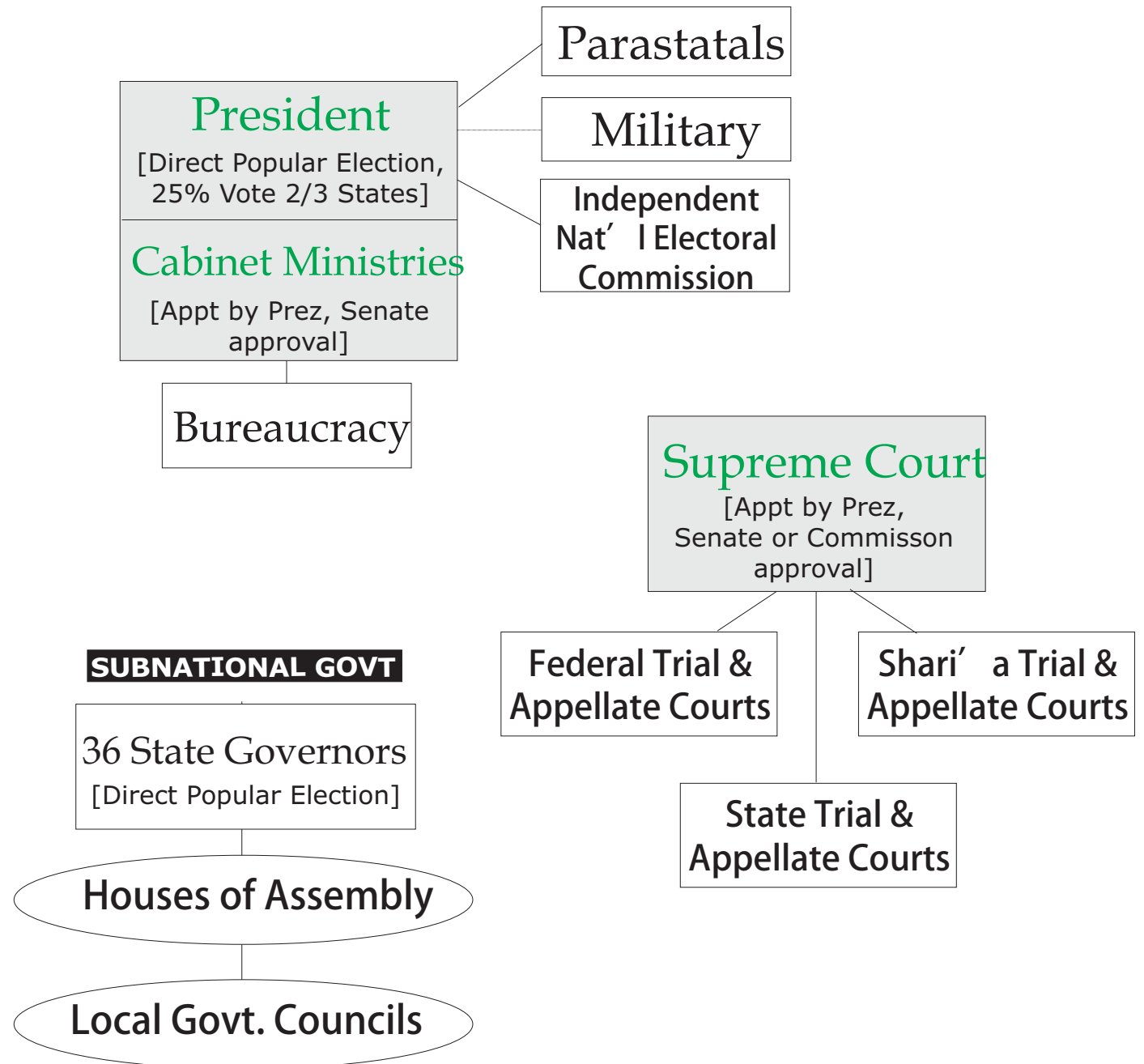
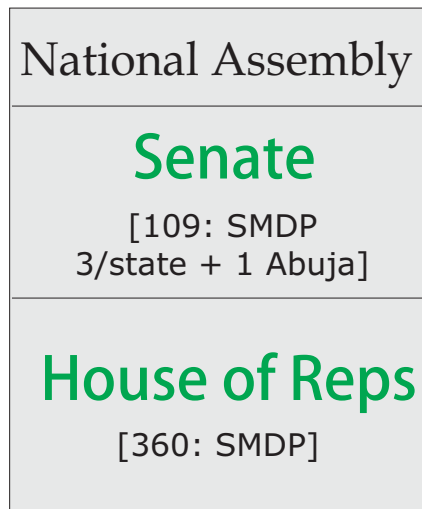


Nigeria

- *Federal
- *Identity Politics
- *Chop Chop Politics
- *Zero Sum Game



Nigerian Elections



Presidential

1999

Obasanjo (PDP) 62.8%
Falae (AD/ANPP) 37.2%

2003

Obasanjo (PDP) 61.9%
Buhari (ANPP) 37.2%

2007

Yar' Adua (PDP) 69.9%
Buhari (ANPP) 18.7%
Abubakar (AC) 7.7%

National Assembly/Legislative

1999

House of Reps (360 seats)
PDP 206 seats
ANPP 71 seats
AD 68 seats

Senate (109 seats)
PDP 59 seats
ANPP 29 seats
AD 20 seats

2003

House of Reps (360 seats)
PDP 223 seats
ANPP 96 seats
AD 34 seats

Senate (109 seats)
PDP 76 seats
ANPP 27 seats
AD 6 seats

2007

House of Reps (360 seats)
PDP 263 seats
ANPP 63 seats
ACN 30 seats

Senate (109 seats)
PDP 87 seats
ANPP 14 seats
ACN 6 seats

Note: PDP = 28 of 36 State Govts

New Contender 2011

Congress for Progressive Change [CPC], Candidate: Buhari

Iranian Elections

2005 Presidential Elections

<u>Candidates</u>	<u>Votes 1st Round</u>	<u>2nd round</u>
Akbar Hashemi Rafsanjani	6,159,453 (21.01%)	10,046,701 (35.93%)
Mahmoud Ahmadinejad	5,710,354 (19.48%)	17,284,782 (61.69%)
Mehdi Karroubi	5,066,316 (17.28%)	
Mohammad Bagher Ghalibaf	4,075,189 (13.90%)	

2009 Presidential Elections

<u>Candidates</u>	<u>Votes 1st Round</u>
Mahmoud Ahmadinejad	24,527,516 (62.63%)
Mir-Hossein Mousavi	13,216,411 (33.75%)

2004 Majlis Elections

<u>Orientation</u>	<u>Seats</u>
Conservatives	156
Reformists	39
Independents	31
Religious Minorities	5

2008 Majlis Elections

<u>Orientation</u>	<u>Seats</u>
Conservatives	195
Reformists	51
Independents	39
Religious Minorities	5

IRAN

- *Theocratic Democracy
- *Jurist's Guardianship
- *Equality with Difference

Supreme Leader

Foundations

Military

Rev. Guards

Supreme Council of the Cultural Revolution

Expediency Council

[# varies, appointed]

Guardian Council

[6 religious, 6 legal appointees]

President

[Direct Popular Election, Majority System]

Cabinet Ministries

[Prez appt, Majlis appr OR Sup Leader appt.]

Bureaucracy

Chief Judge

Supreme Court

[Appt Chief Judge, 33 branches x 2]

Revolutionary Courts (70) & Public Courts (205)

Assembly of Religious Experts

[86: SMD-MMD w/ Runoffs]

Islamic Consultative Assembly (Majlis)

[290: SMD-MMD w/ Runoffs]

SUBNATIONAL GOVT

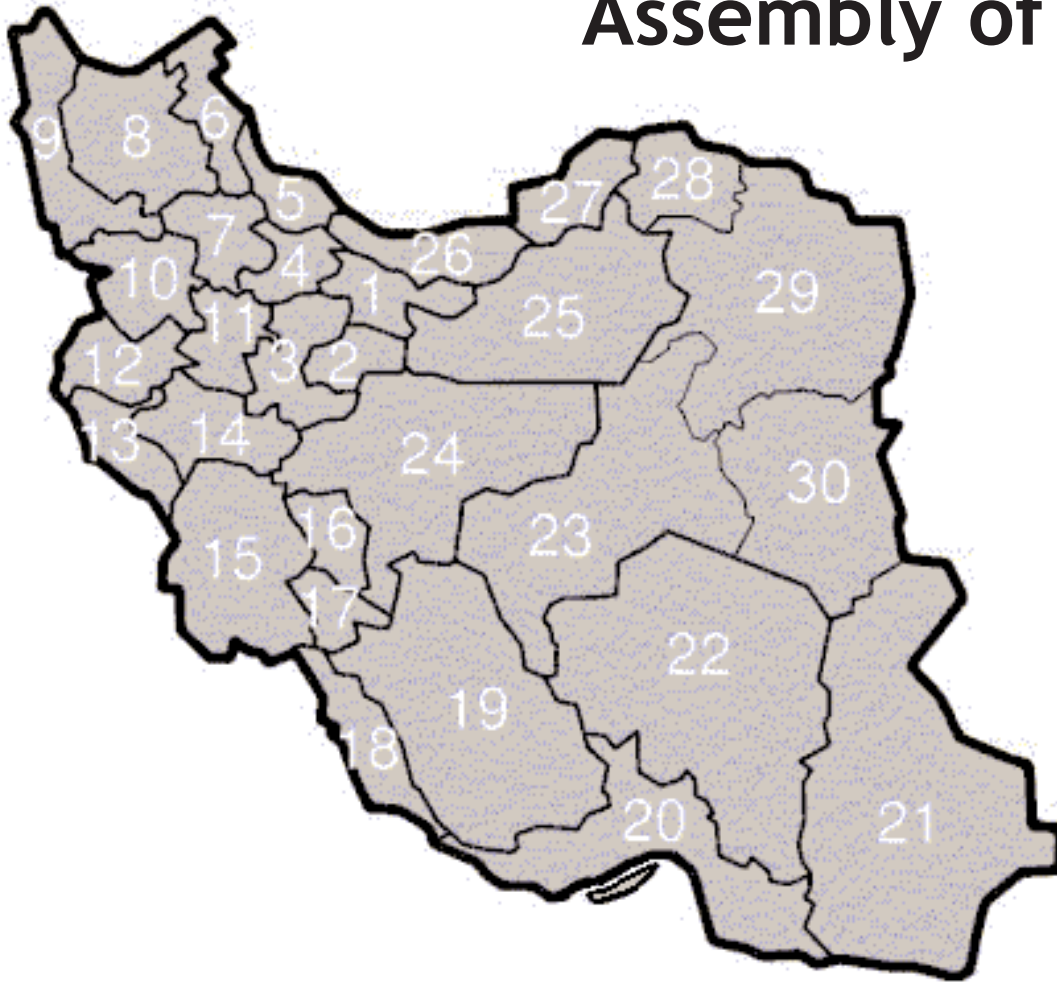
30 Provincial Governors

[Appt. by Prez]

Assembly of Religious Experts

SMD-MMD Combo

86 seats from
30 constituencies



COUNTRY:

HISTORICAL EVENT	IMPACT ON THE STRUCTURE OF GOVERNMENT